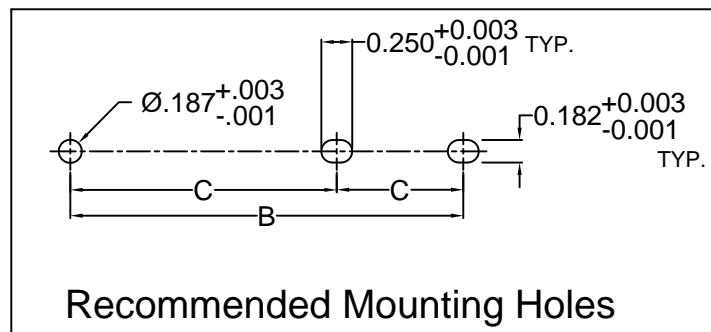
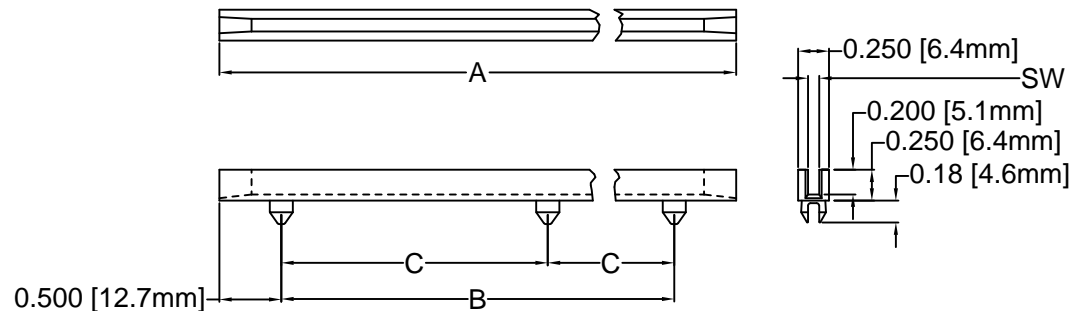


REV.	DESCRIPTION	DATE	APPROVED
B	Engineering Update w/o Changes	02/26/04	M. C.
C	Removed Material Information in Note 2	06/24/11	T. Y.
D	12 Additional Lengths Added	03/28/13	T. Y.
E	Materials Update	07/10/14	J. C.
F	Engineering Update w/o Changes	05/13/16	J. C.



Recommended Mounting Holes

PART NO.	A $\pm.062$ (1.6)	B $\pm.032$ (.8)	C $\pm.015$ (.4)	S.W. $\pm.005$ (.1)	PCB THICK-NESS	DESC DWG. NO.
DC-250	2.5 (63.5)	1.5 (38.1)	--	.080 (2.0)	1/16 (1.6)	84101-01
DC-400	4.0 (101.6)	3.0 (76.2)	--			--
DC-450	4.5 (114.3)	3.5 (88.9)	--			84101-02
DC-500	5.0 (127.0)	4.0 (101.6)	--			--
DC-550	5.5 (139.7)	4.5 (114.3)	--			--
DC-600	6.0 (152.4)	5.0 (127.0)	--			84101-03
DC-650	6.5 (165.1)	5.5 (139.7)	--			--
DC-700	7.0 (177.8)	6.0 (152.4)	--			--
DC-750	7.5 (190.5)	6.5 (165.1)	--	.102 (2.6)	3/32 (2.4)	--
DC-800	8.0 (203.2)	7.0 (177.8)	3.5 (88.9)			84101-04
DC-400-102	4.0 (101.6)	3.0 (76.2)	--			--
DC-450-102	4.5 (114.3)	3.5 (88.9)	--			--
DC-500-102	5.0 (127.0)	4.0 (101.6)	--			--
DC-550-102	5.5 (139.7)	4.5 (114.3)	--			--
DC-600-102	6.0 (152.4)	5.0 (127.0)	--			--
DC-650-102	6.5 (165.1)	5.5 (139.7)	--			--
DC-700-102	7.0 (177.8)	6.0 (152.4)	--	.132 (3.4)	1/8 (3.2)	--
DC-750-102	7.5 (190.5)	6.5 (165.1)	--			--
DC-800-102	8.0 (203.2)	7.0 (177.8)	3.5 (88.9)			--
DC-450-130	4.5 (114.3)	3.5 (88.9)	--			84101-22
DC-600-130	6.0 (152.4)	5.0 (127.0)	--			84101-23
DC-800-130	8.0 (203.2)	7.0 (177.8)	3.5 (88.9)			84101-24

2. MATERIAL: NYLON 66, 15% GLASS, 94V-0, BLACK.

1. GENERAL SPECIFICATIONS: BIVAR MOLDED COMPONENT SPECIFICATION BV00-E101.

STANDARD TOLERANCE (UNLESS OTHERWISE SPECIFIED)		 4 THOMAS, IRVINE, CA. 92618 TEL: (949) 951-8808 FAX: (949) 951-3974	
DECIMALS	ANGULAR		
.X $\pm .1$	X° $\pm 1^\circ$	 TITLE: DEEP CHANNEL CARD GUIDE	
.XX $\pm .01$			
.XXX $\pm .005$		PART NO:	REVISION:
DESIGNED:	DATE:	DC-XXX-XXX	F
D. Green	01/06/03	CAGE CODE : 32559	SHEET # 1 OF 1
CHECKED:	DATE:	CAD GENERATED DOCUMENT. DO NOT MEASURE DRAWING.	
M. Chen	01/06/03		